



EFFER ix.195 HP

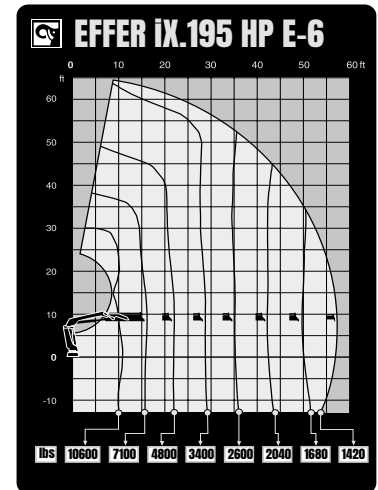
TECHNICAL SPECIFICATION

EFFER iX.195 HP

TECHNICAL DATA	iX.195 HP E-2	iX.195 HP E-3	iX.195 HP E-4	iX.195 HP E-5	iX.195 HP E-6
Max. lifting capacity (ft-lbs)	130 770	126 620	123 170	120 400	118 010
Outreach, hydraulic extensions (ft)	28' 3"	35' 3"	42' 2"	49' 8"	57' 6"
Outreach, manual extensions (ft)	34' 9"	42' 5"	49' 3"	57' 6"	63' 5"
Outreach, with jib (ft)	-	-	-	-	-
Outreach / lifting capacity (ft-lbs)	10' 6" - 12 350	10' 10" - 11 680	10' 10" - 11 460	11' 2" - 10 800	11' 2" - 10 580
	15' 5" - 8 490	15' 9" - 8 050	15' 9" - 7 830	16' 1" - 7 390	16' 5" - 7 050
	21' 4" - 6 060	21' 8" - 5 620	21' 8" - 5 420	22' 0" - 5 110	22' 4" - 4 810
	27' 11" - 4 630	28' 3" - 4 230	28' 3" - 3 970	28' 7" - 3 660	28' 10" - 3 400
	-	34' 9" - 3 400	34' 9" - 3 130	35' 1" - 2 870	35' 5" - 2 600
	-	-	41' 8" - 2 600	42' 0" - 2 290	42' 4" - 2 050
	-	-	-	49' 3" - 1 940	49' 6" - 1 680
Outreach / lifting capacity, with jib (ft-lbs)	-	-	-	-	-
Slewing angle (°)	415	415	415	415	415
Height in folded position (in)	98	98	98	98	98
Width in folded position (in)	100	100	100	100	100
Installation space needed (in)	59	59	59	59	59
Weight, "standard" crane without stabilizers (lbs)	4 270	4 620	4 930	5 240	5500
Weight, stabilizer equipment (lbs)	600 - 940	600 - 940	600 - 940	600 - 940	600 - 940
Weight, jib (lbs)	-	-	-	-	-

Features

- HP-Drive remote control system
- VSL: Variable Stability Limit (Optional)
- LSS-V: Load Stability System
- SAF: Semi Automatic Folding
- HiConnect
- nDurance™ nano technology coating
- 1 Year warranty - All inclusive
- 3 Year warranty - Structural



Hiab is a leading provider of smart and sustainable load handling solutions. We are committed to delivering the best customer experience every day with the most engaged people and partners. Hiab's premium equipment includes HIAB, EFFER and ARGOS loader cranes, MOFFETT and PRINCETON truck mounted forklifts, LOGLIFT forestry cranes, JONSERED recycling cranes, MULTILIFT skiploaders and hooklifts, GALFAB roll-off cable hoists, and tail lifts under the ZEPRO, DEL and WALTCO brands. As the industry pioneer, Hiab continues to make load handling smarter, safer and more sustainable to build a better tomorrow.



Hiab USA, Inc.
 12233 Williams Rd
 Perrysburg, 43551 OH USA
 tel. +419 482 6000

effer.com - hiab.com

EFFER is part of Hiab