



EFFER 235 HP

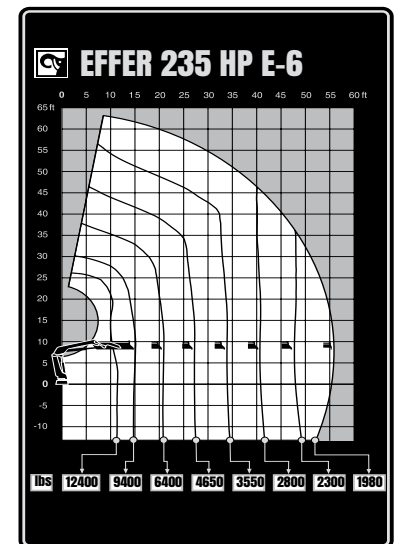
TECHNICAL SPECIFICATION

EFFER 235 HP

TECHNICAL DATA	235 HP E-3	235 HP E-4	235 HP E-5	235 HP E-6
Max. lifting capacity (ft-lbs)	149 990	146 450	143 330	140 590
Outreach, hydraulic extensions (ft)	34' 11"	41' 10"	49' 6"	56' 10"
Outreach / lifting capacity (ft-lbs)	11' 6" - 13 010	11' 6" - 12 790	11' 10" - 12 130	11' 10" - 10 800
	15' 5" - 9 700	15' 5" - 9 480	16' 1" - 8 930	16' 1" - 8 710
	21' 4" - 6 830	21' 4" - 6 610	21' 8" - 6 280	22' 0" - 5 950
	27' 11" - 5 160	27' 11" - 4 890	28' 3" - 4 630	28' 3" - 4 410
	34' 5" - 4 140	34' 5" - 3 880	35' 1" - 3 570	34' 9" - 3 350
	-	41' 4" - 3 220	42' 0" - 2 910	41' 8" - 2 690
	-	-	49' 3" - 2 470	48' 11" - 2 250
	-	-	-	56' 5" - 1 920
Slewing angle (°)	415	415	415	415
Height in folded position (in)	89	89	89	89
Width in folded position (in)	98	98	98	98
Installation space needed (in)	42	42	42	46
Weight, "standard" crane without stabilizers (lbs)	4 670	4 980	5 250	5 530
Weight, stabilizer equipment (lbs)	600 - 940	600 - 940	600 - 940	600 - 940

Features

- HP-Drive remote control system
- VSL: Variable Stability Limit (Optional)
- LSS-V: Load Stability System
- SAF: Semi Automatic Folding
- HiConnect
- nDurance™ nano technology coating
- 1 Year warranty - All inclusive
- 3 Year warranty - Structural



Hiab is a leading provider of smart and sustainable load handling solutions. We are committed to delivering the best customer experience every day with the most engaged people and partners. Hiab's premium equipment includes HIAB, EFFER and ARGOS loader cranes, MOFFETT and PRINCETON truck mounted forklifts, LOGLIFT forestry cranes, JONSERED recycling cranes, MULTILIFT skiploaders and hooklifts, GALFAB roll-off cable hoists, and tail lifts under the ZEPRO, DEL and WALTCO brands. As the industry pioneer, Hiab continues to make load handling smarter, safer and more sustainable to build a better tomorrow.



Hiab USA, Inc.
 12233 Williams Rd
 Perrysburg, 43551 OH USA
 tel. +419 482 6000

effer.com - hiab.com
 EFFER is part of Hiab