



# EFFER 230 LD / 240 LHP

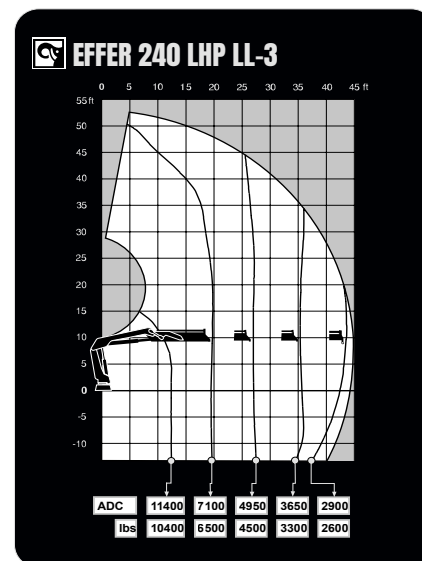
TECHNICAL SPECIFICATION

# EFFER 230 LD / 240 LHP

TECHNICAL DATA	* 230 LD LL-2	* 230 LD LL-3	** 240 LHP LL-2	** 240 LHP LL-3
Max. lifting capacity (ft-lbs)	139 840	135 050	146 080	141 090
Outreach, hydraulic extensions (ft)	36' 5"	44' 11"	36' 5"	44' 11"
Outreach / lifting capacity (ft-lbs)	12' 2" - 11460 19' 8" - 7 050 26' 11" - 5 070 34' 9" - 3 880 -	12' 6" - 10 800 19' 8" - 6 830 26' 11" - 4 720 35' 1" - 3 480 43' 4" - 2 780	12' 2" - 11 900 19' 8" - 7 390 26' 11" - 5 290 34' 9" - 4 060 -	12' 6" - 11 240 19' 8" - 7 170 26' 11" - 4 980 35' 1" - 3 660 43' 4" - 2 910
Slewing angle (°)	410	410	410	410
Height in folded position (in)	93	93	93	93
Width in folded position (in)	100	100	100	100
Installation space needed (in)	37	37	37	37
Weight, "standard" crane without stabilizers (lbs)	4 680	5 100	4 540	4 960
Weight, stabilizer equipment (lbs)	600 - 940	600 - 940	600 - 940	600 - 940

## Features

- \* D-Drive remote control system
- \*\* HP-Drive remote control system
- VSL: Variable Stability Limit (Optional)
- LSS-V: Load Stability System
- 1 Year warranty - All inclusive
- 3 Year warranty - Structural
- SAF: Semi Automatic Folding
- HiConnect
- nDurance™ nano technology coating



Hiab is a leading provider of smart and sustainable load handling solutions. We are committed to delivering the best customer experience every day with the most engaged people and partners. Hiab's premium equipment includes HIAB, EFFER and ARGOS loader cranes, MOFFETT and PRINCETON truck mounted forklifts, LOGLIFT forestry cranes, JONSERED recycling cranes, MULTILIFT skiploaders and hooklifts, GALFAB roll-off cable hoists, and tail lifts under the ZEPRO, DEL and WALTCO brands. As the industry pioneer, Hiab continues to make load handling smarter, safer and more sustainable to build a better tomorrow.



**Hiab USA, Inc.**  
12233 Williams Rd  
Perrysburg, 43551 OH USA  
tel. +419 482 6000

[effer.com](http://effer.com) - [hiab.com](http://hiab.com)

EFFER is part of Hiab