



EFFER 190 D

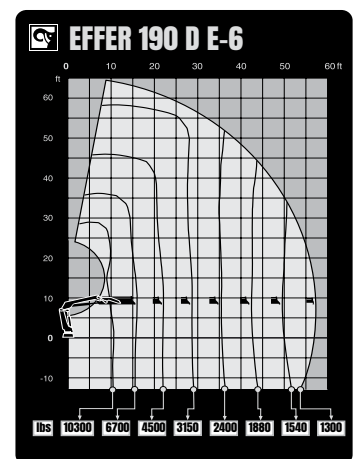
TECHNICAL SPECIFICATION

EFFER 190 D

TECHNICAL DATA	190 D B-1	190 D B-2	190 D B-3	190 D E-4	190 D E-5	190 D E-6
Max. lifting capacity (ft-lbs)	129 730	124 670	121 190	116 640	113 960	110 850
Outreach, hydraulic extensions (ft)	21' 5"	28' 4"	35' 4"	42' 2"	49' 8"	57' 6"
Outreach, manual extensions (ft)	28' 4"	35' 4"	42' 6"	49' 9"	57' 6"	63' 9"
Outreach, with jib (ft)	-	-	-	-	-	-
Outreach / lifting capacity (ft-lbs)	10' 6" - 12 130	10' 6" - 11 900	11' 2" - 10 800	10' 2" - 11 460	10' 6" - 10 800	9' 10" - 11 020
	14' 9" - 8 710	15' 1" - 8 270	15' 1" - 7 940	15' 9" - 7 390	16' 1" - 7 050	15' 5" - 7 170
	20' 8" - 6 280	21' 0" - 5 840	21' 0" - 5 510	21' 8" - 5 110	22' 0" - 4 810	21' 4" - 4 760
	-	27' 7" - 4 450	27' 7" - 4 100	28' 3" - 3 750	28' 7" - 3 440	27' 11" - 3 350
	-	-	34' 1" - 3 310	34' 9" - 2 950	35' 1" - 2 650	34' 5" - 2 510
	-	-	-	41' 8" - 2 430	42' 0" - 2 140	41' 4" - 1 960
Outreach / lifting capacity, with jib (ft-lbs)	-	-	-	-	-	-
Slewing angle (°)	415	415	415	415	415	415
Height in folded position (in)	98	98	98	98	98	98
Width in folded position (in)	100	100	100	100	100	100
Installation space needed (in)	59	59	59	59	59	59
Weight, "standard" crane without stabilizers (lbs)	3 690	4 020	4 400	4 970	5 290	5 540
Weight, stabilizer equipment (lbs)	600 - 940	600 - 940	600 - 940	600 - 940	600 - 940	600 - 940
Weight, jib (lbs)	-	-	-	-	-	-

Features

- D-Drive remote control system
- VSL: Variable Stability Limit (Optional)
- LSS-V: Load Stability System
- SAF: Semi Automatic Folding
- HiConnect
- nDurance™ nano technology coating
- 1 Year warranty - All inclusive
- 3 Year warranty - Structural



Hiab is a leading provider of smart and sustainable load handling solutions. We are committed to delivering the best customer experience every day with the most engaged people and partners. Hiab's premium equipment includes HIAB, EFFER and ARGOS loader cranes, MOFFETT and PRINCETON truck mounted forklifts, LOGLIFT forestry cranes, JONSERED recycling cranes, MULTILIFT skiploaders and hooklifts, GALFAB roll-off cable hoists, and tail lifts under the ZEPRO, DEL and WALTCO brands. As the industry pioneer, Hiab continues to make load handling smarter, safer and more sustainable to build a better tomorrow.



Hiab USA, Inc.
 12233 Williams Rd
 Perrysburg, 43551 OH USA
 tel. +419 482 6000

effer.com - hiab.com
 EFFER is part of Hiab