



EFFER 160 D

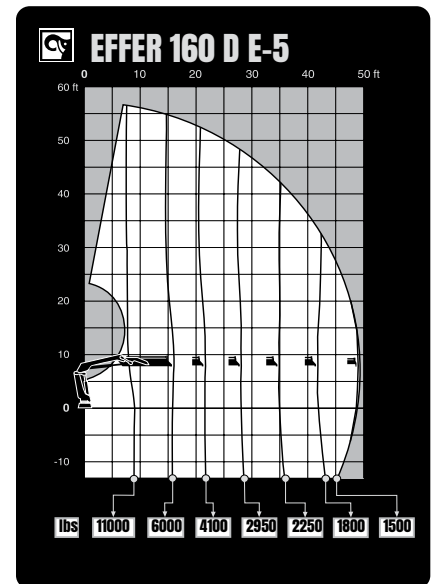
TECHNICAL SPECIFICATION

EFFER 160 D

TECHNICAL DATA	160 D B-2	160 D B-3	160 D E-4	160 D E-5
Max. lifting capacity (ft-lbs)	104 770	101 080	95 220	94 420
Outreach, hydraulic extensions (ft)	27' 7"	34' 9"	42' 0"	49' 6"
Outreach / lifting capacity (ft-lbs)	9' 6" - 11 020 14' 5" - 7 280 20' 4" - 5 070 26' 7" - 3 860 - - -	10' 2" - 9 920 14' 9" - 6 720 20' 8" - 4 740 26' 11" - 3 530 33' 10" - 2 870 - -	8' 2" - 11 460 15' 5" - 6 170 21' 4" - 4 280 27' 7" - 3 170 34' 5" - 2 430 41' 8" - 1 980 -	8' 6" - 11 020 15' 9" - 5 950 21' 8" - 4 100 27' 11" - 2 950 34' 9" - 2 250 42' 0" - 1 810 49' 3" - 1 500
Slewing angle (°)	415	415	415	415
Height in folded position (in)	88	88	89	89
Width in folded position (in)	96	98	95	99
Installation space needed (in)	40	40	41	41
Weight, "standard" crane without stabilizers (lbs)	3 510	3 750	4 450	4 700
Weight, stabilizer equipment (lbs)	540 - 850	540 - 850	540 - 850	540 - 850

Features

- D-Drive remote control system
- VSL: Variable Stability Limit (Optional)
- LSS-V: Load Stability System
- SAF: Semi Automatic Folding
- HiConnect
- nDurance™ nano technology coating
- 1 Year warranty - All inclusive
- 3 Year warranty - Structural



Hiab is a leading provider of smart and sustainable load handling solutions. We are committed to delivering the best customer experience every day with the most engaged people and partners. Hiab's premium equipment includes HIAB, EFFER and ARGOS loader cranes, MOFFETT and PRINCETON truck mounted forklifts, LOGLIFT forestry cranes, JONSERED recycling cranes, MULTILIFT skiploaders and hooklifts, GALFAB roll-off cable hoists, and tail lifts under the ZEPRO, DEL and WALTCO brands. As the industry pioneer, Hiab continues to make load handling smarter, safer and more sustainable to build a better tomorrow.



Hiab USA, Inc.
12233 Williams Rd
Perrysburg, 43551 OH USA
tel. +419 482 6000

effer.com - hiab.com

EFFER is part of Hiab