



EFFER 145 HP

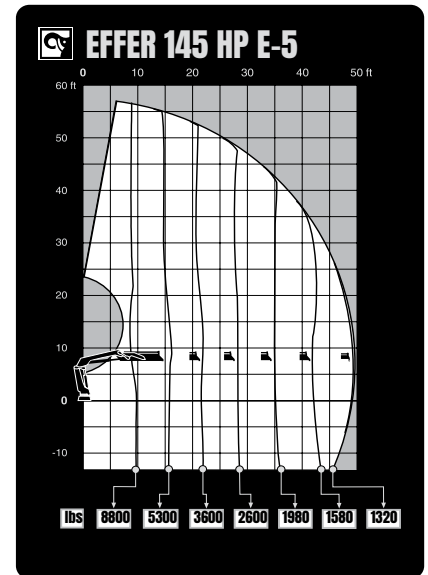
TECHNICAL SPECIFICATION

EFFER 145 HP

TECHNICAL DATA	145 HP E-2	145 HP E-3	145 HP E-4	145 HP E-5
Max. lifting capacity (ft-lbs)	92 180	90 010	84 800	84 080
Outreach, hydraulic extensions (ft)	27' 3"	34' 5"	42' 0"	49' 6"
Outreach / lifting capacity (ft-lbs)	8' 6" - 10 800	8' 6" - 10 140	9' 2" - 9 480	9' 6" - 8 820
	14' 9" - 6 170	15' 1" - 5 950	15' 5" - 5 510	15' 9" - 5 290
	20' 8" - 4 370	21' 0" - 4 100	21' 4" - 3 840	21' 8" - 3 620
	26' 11" - 3 350	27' 3" - 3 090	27' 7" - 2 820	27' 11" - 2 600
	-	34' 1" - 2 430	34' 5" - 2 160	34' 9" - 1 980
	-	-	41' 8" - 1 760	42' 0" - 1 590
Slewing angle (°)	415	415	415	415
Height in folded position (in)	89	89	89	89
Width in folded position (in)	94	96	98	99
Installation space needed (in)	39	40	40	40
Weight, "standard" crane without stabilizers (lbs)	3 790	4 030	4 250	4 450
Weight, stabilizer equipment (lbs)	540 - 850	540 - 850	540 - 850	540 - 850

Features

- HP-Drive remote control system
- VSL: Variable Stability Limit (Optional)
- LSS-V: Load Stability System
- SAF: Semi Automatic Folding
- HiConnect
- nDurance™ nano technology coating
- 1 Year warranty - All inclusive
- 3 Year warranty - Structural



Hiab is a leading provider of smart and sustainable load handling solutions. We are committed to delivering the best customer experience every day with the most engaged people and partners. Hiab's premium equipment includes HIAB, EFFER and ARGOS loader cranes, MOFFETT and PRINCETON truck mounted forklifts, LOGLIFT forestry cranes, JONSERED recycling cranes, MULTILIFT skiploaders and hooklifts, GALFAB roll-off cable hoists, and tail lifts under the ZEPRO, DEL and WALTCO brands. As the industry pioneer, Hiab continues to make load handling smarter, safer and more sustainable to build a better tomorrow.



Hiab USA, Inc.
 12233 Williams Rd
 Perrysburg, 43551 OH USA
 tel. +419 482 6000

effer.com - hiab.com

EFFER is part of Hiab