

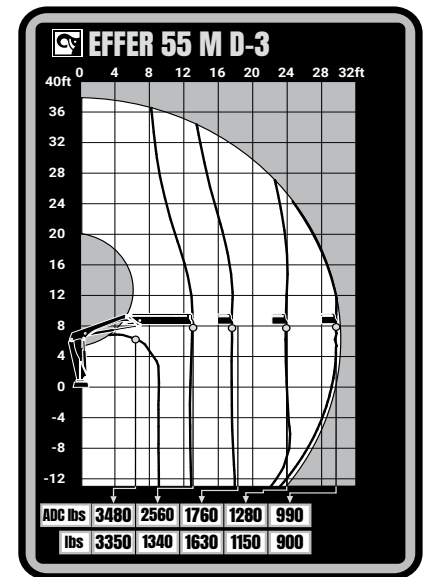


EFFER 55 M

TECHNICAL SPECIFICATION

EFFER 55 M

TECHNICAL DATA	55 M D-1	55 M D-2	55 M D-3
Max. lifting capacity (ft-lbs)	33 210	32 490	30 970
Outreach, hydraulic extensions (ft)	17' 9"	23' 11"	30' 6"
Outreach, manual extensions (ft)	30' 6"	37' 1"	37' 1"
Outreach / lifting capacity (ft-lbs)	7' 3" - 4 890	8' 2" - 4 190	9' 6" - 3 480
	12' 6" - 2 910	12' 10" - 2 730	13' 1" - 2 560
	17' 5" - 2 070	17' 9" - 1 900	18' 1" - 1 760
	-	23' 7" - 1 410	23' 11" - 1 280
	-	-	30' 6" - 990
Slewing angle (°)	410	410	410
Height in folded position (in)	75	75	75
Width in folded position (in)	76	79	85
Installation space needed (in)	29	29	29
Weight, "standard" crane without stabilizers (lbs)	1 630	1 810	1 940
Weight, stabilizer equipment (lbs)	230 - 350	230 - 350	230 - 350
Weight, jib (lbs)	-	-	-



Features

- M-Drive manual control system
- VSL: Variable Stability Limit (Optional)
- HiConnect
- nDurance™ nano technology coating

- 1 Year warranty - All inclusive
- 3 Year warranty - Structural



Hiab is a leading provider of smart and sustainable load handling solutions. We are committed to delivering the best customer experience every day with the most engaged people and partners. Hiab's premium equipment includes HIAB, EFFER and ARGOS loader cranes, MOFFETT and PRINCETON truck mounted forklifts, LOGLIFT forestry cranes, JONSERED recycling cranes, MULTILIFT skiploaders and hooklifts, GALFAB roll-off cable hoists, and tail lifts under the ZEPRO, DEL and WALTCO brands. As the industry pioneer, Hiab continues to make load handling smarter, safer and more sustainable to build a better tomorrow.



Hiab USA, Inc.
12233 Williams Rd
Perrysburg, 43551 OH USA
tel. +419 482 6000

effer.com - hiab.com

EFFER is part of Hiab