

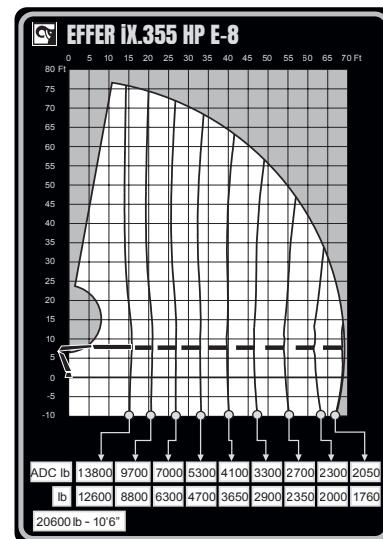


EFFER IX.355 HP

TECHNICAL SPECIFICATION

EFFER iX.355 HP

TECHNICAL DATA	IX.355 HP E-5 + JIB 100X-2	IX.355 HP E-8
Max. lifting capacity (ft-lbs)	209 180	197 750
Outreach, hydraulic extensions (ft)	-	68' 11"
Outreach, with jib (ft)	64' 4"	-
Outreach / lifting capacity (ft-lbs)	55' 5" - 2 160	10' 6" - 20 500
	59' 9" - 1 980	15' 9" - 13 890
	64' 4" - 1 830	21' 0" - 9 700
	-	26' 11" - 6 940
	-	33' 2" - 5 250
	-	39' 8" - 4 100
	-	46' 7" - 3 310
	-	53' 10" - 2 730
Slewing angle (°)	420	420
	102	94
	99	100
Installation space needed (in)	54	52
Weight, "standard" crane without stabilizers (lbs)	10 250	9 350
Weight, stabilizer equipment (lbs)	1 000 - 1 230	1 000 - 1 230



Features

- HP-Drive remote control system
- VSL: Variable Stability Limit (Optional)
- LSS-V: Load Stability System (Optional)
- 1 Year warranty - All inclusive
- 3 Year warranty - Structural
- SAF: Semi Automatic Folding
- HiConnect
- nDurance™ nano technology coating



Hiab is a leading provider of smart and sustainable load handling solutions. We are committed to delivering the best customer experience every day with the most engaged people and partners. Hiab's premium equipment includes HIAB, EFFER and ARGOS loader cranes, MOFFETT and PRINCETON truck mounted forklifts, LOGLIFT forestry cranes, JONSERED recycling cranes, MULTILIFT skiploaders and hooklifts, GALFAB roll-off cable hoists, and tail lifts under the ZEPRO, DEL and WALTCO brands. As the industry pioneer, Hiab continues to make load handling smarter, safer and more sustainable to build a better tomorrow.



Hiab USA, Inc.
 12233 Williams Rd
 Perrysburg, 43551 OH USA
 tel. +419 482 6000

effer.com - hiab.com

EFFER is part of Hiab