

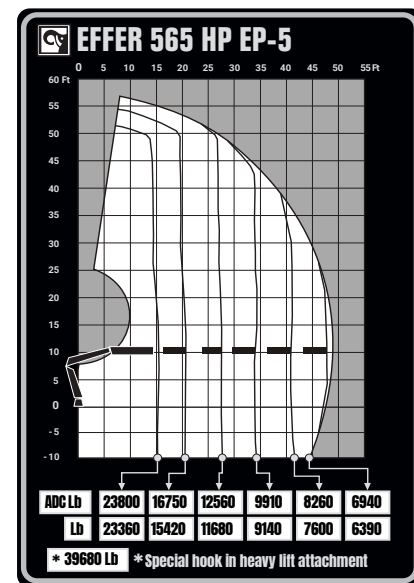


EFFER 565 HP

TECHNICAL SPECIFICATION

EFFER 565 HP

TECHNICAL DATA	565 HP EP-3	565 HP EP-4	565 HP EP-5
Max. lifting capacity (ft-lbs)	367 900	362 000	359 190
Outreach, hydraulic extensions (ft)	33' 10"	39' 8"	47' 7"
Outreach / lifting capacity (ft-lbs)	15' 1" - 24 460	14' 5" - 25 120	15' 1" - 23 800
	20' 1" - 17 410	20' 4" - 17 630	21' 0" - 16 750
	27' 2" - 13 440	26' 6" - 13 220	27' 3" - 12 560
	33' 9" - 10 680	33' 1" - 10 460	33' 10" - 9 910
	-	39' 8" - 8 700	40' 4" - 8 260
	-	-	47' 7" - 6 940
Slewing angle (°)	∞	∞	∞
Height in folded position (in)	98	98	98
Width in folded position (in)	100	100	100
Installation space needed (in)	50	51	51
Weight, "standard" crane without stabilizers (lbs)	9 000	9 410	10 057
Weight, stabilizer equipment (lbs)	1 880 - 2 120	1 880 - 2 120	1 880 - 2 120



Features

- HP-Drive remote control system
- VSL: Variable Stability Limit (Optional)
- LSS-V: Load Stability System
- HiConnect
- nDurance™ nano technology coating
- SAF: Semi Automatic Folding

- 1 Year warranty - All inclusive
- 3 Year warranty - Structural



Hiab is a leading provider of smart and sustainable load handling solutions. We are committed to delivering the best customer experience every day with the most engaged people and partners. Hiab's premium equipment includes HIAB, EFFER and ARGOS loader cranes, MOFFETT and PRINCETON truck mounted forklifts, LOGLIFT forestry cranes, JONSERED recycling cranes, MULTILIFT skiploaders and hooklifts, GALFAB roll-off cable hoists, and tail lifts under the ZEPRO, DEL and WALTCO brands. As the industry pioneer, Hiab continues to make load handling smarter, safer and more sustainable to build a better tomorrow.



Hiab USA, Inc.
 12233 Williams Rd
 Perrysburg, 43551 OH USA
 tel. +419 482 6000

effer.com - hiab.com

EFFER is part of Hiab