

# COMPACT CRANES, LARGE TASKS

## EFFER ADDRESSES YOUR INDUSTRY PAIN POINTS

EFFER loader cranes are stronger, tougher, and smarter, easily adapting to the ever changing needs of the material handling industry. With reliable support, intelligent services, and a growing number of connected solutions, EFFER loader cranes will maximize performance by offering the right solution for loading, unloading, or moving materials. Like no other truck mounted equipment provider, EFFER understands the specific requirements and realities of any industry and will help secure a safer, more efficient operation with reduced downtime while maximizing revenue.

- SAFETY**  
 EFFER's industry leading technology provides world class safety features that keep operators safe and in control, minimizing risk to individuals or the environment. With the smart technology solutions of EFFER's loader cranes, human driven errors and unsafe operations are reduced.
- EFFICIENCY**  
 EFFER's advanced technology drives the performance of the equipment resulting in superior operation efficiencies. EFFER's class-leading products can not only be used by operators of different skill levels, but are also helpful with everchanging resources, supporting business efficiency and increasing productivity.
- DOWNTIME**  
 EFFER's renowned reliability combined with industry leading safety features and control systems is proven to reduce downtime, while our nationwide service network ensures that equipment is maintained with minimal oversight.
- TRAINING**  
 Training and educating operators takes time, but EFFER's advanced control systems and technology allows customers to manage their resources in the best way, whether the operator is highly experienced or a new employee without losing too much time.
- RELIABILITY**  
 EFFER loader cranes are the industry leaders in the area of reliability. Our premium engineering and cutting edge operation management features ensure optimum longevity and service life of your equipment. All backed up with the most comprehensive warranty in the market.
- REVENUE**  
 EFFER loader cranes provide many cost benefits that are ideal for businesses with repetitive, efficient operations. With a reliable design, quality materials, game changing smart technology, and industry specific innovation, investing in EFFER equipment provides a total package for any industry.



## FEATURES THAT OPTIMIZE OPERATIONS

- nDurance™** finish is an anti-corrosion paint system using nano technology for maintaining a rust-free reliable crane.
- EFFER D-Drive** controlled cranes combined with the XSDrive remote system brings a high level of safety to operations without reducing performance. This highly flexible system will make your business safer and more profitable with all electronic functions, managed by our SPACE system, which includes Overload Protection (OLP) and Automatic Duty Control (ADC). When approaching an overload condition, the crane gives an audible and visual signal and will stop all radius increasing functions once full capacity has been reached.
- The XSDRIVE REMOTE CONTROL** increases efficiency by giving the operator freedom of movement to use the best possible position to view the load. It features two way communication with the crane, proportionally controlling movements.
- EFFER 'M'** models are manually operated and easy to use, supplemented with key automatic safety features that eliminate the need for special training. Tracking the usage through the input of valuable statistics improves the decision making process indicating when service and repairs are needed.

Our extensive stock of parts at our **REGIONAL DISTRIBUTION CENTER** ensures next-day delivery on almost all items, reducing downtime and saving you money. The same team you trust to deliver high-quality, premium products to your exact requirements can also be trusted to keep you moving.



EFFER's **COMPREHENSIVE WARRANTY** exceeds the industry's standard terms because our products are designed to last longer and provide many years of reliable service.

EFFER's innovative design elements have the working **ENVIRONMENT** in mind. EFFER cranes have a high performing control system, which saves on fuel consumption. Our Valve 200, when combined with a variable displacement piston pump, provides the highest level of speed, precision, and efficiency available. On average, a EFFER crane with the V200 and variable pump will consume 325 gallons less diesel fuel per year compared to other models using fixed displacement pumps.



## HiConnect™

HiConnect™ is a web-based dashboard that displays insights on equipment usage, location, time in operation, idle time, and productivity level. By enabling new insights, it helps you to further increase efficiency, productivity, and safety. HiConnect is the latest technology in terms of connectivity capabilities. Being able to remotely access data is key to maximizing your business with facts instead of assumptions. HiConnect maintains constant contact with all units, giving fleet managers the ability to stop unsafe behavior and usage before an incident happens. With the ability to view service history and plan upcoming services, your fleet has minimum downtime and increases daily efficiencies.

Hiab is a leading provider of smart and sustainable load handling solutions. We are committed to delivering the best customer experience every day with the most engaged people and partners. Hiab's premium equipment includes HIAB, EFFER and ARGOS loader cranes, MOFFETT and PRINCETON truck mounted forklifts, LOGLIFT forestry cranes, JONSERED recycling cranes, MULTILIFT skiploaders and hooklifts, GALFAB roll-off cable hoists, and tail lifts under the ZEPRO, DEL and WALTCO brands. As the industry pioneer, Hiab continues to make load handling smarter, safer and more sustainable to build a better tomorrow.

[effer.com](http://effer.com) - [hiab.com](http://hiab.com)

EFFER is part of Hiab

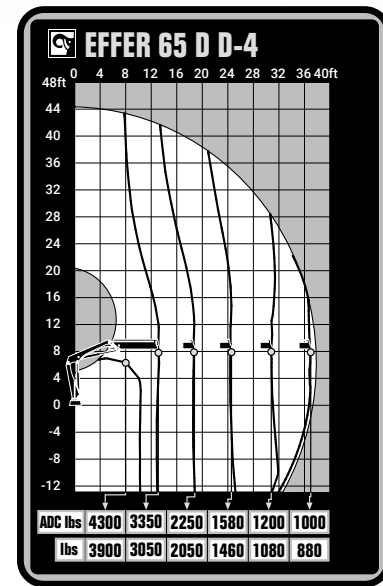


Hiab Inc Usa  
 12233 Williams Road  
 Perrysburg, OH 43551 USA  
 tel. +419 482 6000

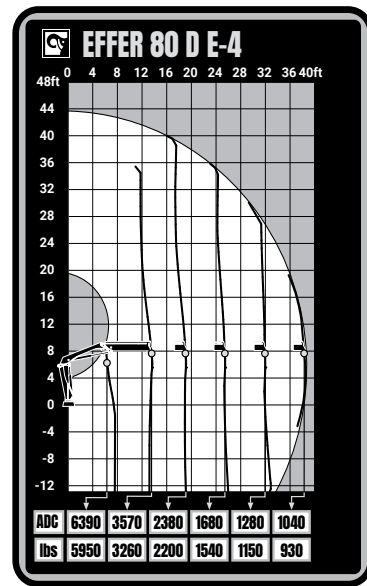
**PRODUCT RANGE**  
**LIGHT RANGE CRANES**



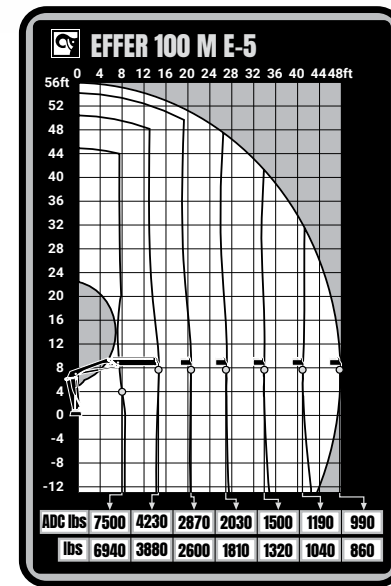
## 65 D



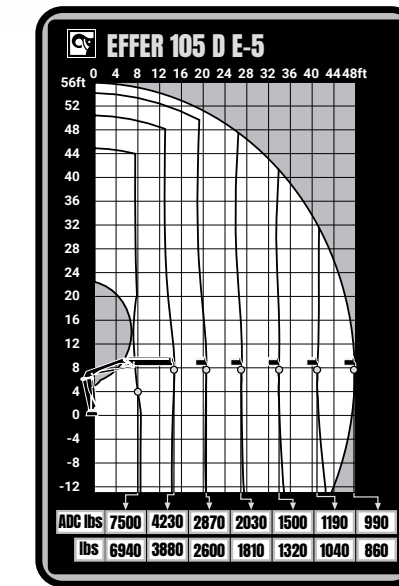
## 80 D



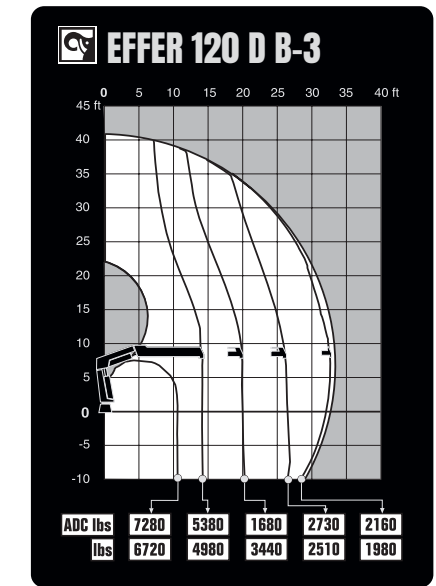
## 100 M



## 105 D



## 120 D



EFFER light range cranes are stronger, tougher, and smarter, easily adapting to the ever changing needs of our customers. With reliable support, intelligent services, and a growing number of connected solutions, EFFER light range cranes will maximize performance by offering the right solution for loading, unloading, or moving materials. Like no other truck mounted equipment provider, EFFER understands the specific requirements and realities of any industry and will help secure a safer, more efficient operation with reduced downtime while maximizing revenue.

TECHNICAL DATA	65 D D-3	75 M B-3	75 M E-4
Lifting capacity (ft-lbs)	44.991	46.466	44.253
Maximum Outreach	30'6"	30'2"	38'1"
Lifting capacity at max (lbs)	1.366	1.411	926
Control system	D-Drive remote control system	M-Drive manual control system	M-Drive manual control system
Crane Weight w/ Stabs	2.448	3.005	3.181

TECHNICAL DATA	80 D B-3	100 M B-3	100 M E-5
Lifting capacity (ft-lbs)	50.154	61.218	57.530
Maximum Outreach	30'2"	31'2"	46'7"
Lifting capacity at max lbs	1.543	1.851	860
Control system	D-Drive remote control system	M-Drive manual control system	M-Drive manual control system
Crane Weight w/ Stabs	3.005	3.380	4.151

TECHNICAL DATA	105 D B-3	105 D E-5	120 D B-3	120 D E-4	120 D E-5
Lifting capacity (ft-lbs)	66.380	62.692	74.493	73.387	71.396
Maximum Outreach	31'2"	46'7"	32'2"	40'8"	47'11"
Lifting capacity at max lbs	2.028	1.190	2.160	1.499	1.058
Control system	D-Drive remote control system	D-Drive remote control system	D-Drive remote control system	D-Drive remote control system	D-Drive remote control system
Crane Weight w/ Stabs	3.380	4.151	3.534	4.240	4.482